



## **Longitudinal Enrollment Report**

October 2023

## Table of Contents

Preliminary Fall 2023 Enrollment	3
Historical Fall Enrollment	4
Fall and Spring Enrollment	5
Enrollment by First-Time and Degree-Seeking Status	6
Enrollment by Full-Time and Part-Time Status	7
Enrollment by Credit Hour Load	8
Enrollment by Residence	9
Enrollment by Age	10
Enrollment by Online and Face-to-Face	11
Enrollment by Concurrent and Dual - Fall	12
Concurrent and Dual Enrollment Breakdown - Annual	13
Service Area High School Graduates - Projected	14
Service Area High School Graduates - by High School	15
Enrollment at Cody Center	16
Wyoming Community College FTE Enrollment - Fall	17
Fall-to-Fall Retention Rate	18
Fall-to-Spring Retention Rate	19
Graduation Rate	20

## Preliminary Fall 2023 Enrollment\*

<b>Headcount</b>	<b>1368</b>
<b>FTE</b>	<b>1133</b>

<b>Enrollment Status</b>	<b>Headcount</b>	<b>% of Total</b>
Full-Time	647	47%
Part-Time	721	53%
<i>Total</i>	<i>1368</i>	<i>100%</i>

<b>First-Time and Degree-Seeking Status</b>	<b>Headcount</b>	<b>% of Total</b>
First-Time Degree-Seeking	275	20%
All Other Degree-Seeking	556	41%
Non-Degree-Seeking	537	39%
<i>Total</i>	<i>1368</i>	<i>100%</i>

<b>Residency</b>	<b>Headcount</b>	<b>% of Total</b>
Wyoming Service Area	965	71%
Wyoming Out-of-Service Area	108	8%
WUE State	161	12%
Other Out-of-State	134	10%
<i>Total</i>	<i>1368</i>	<i>100%</i>

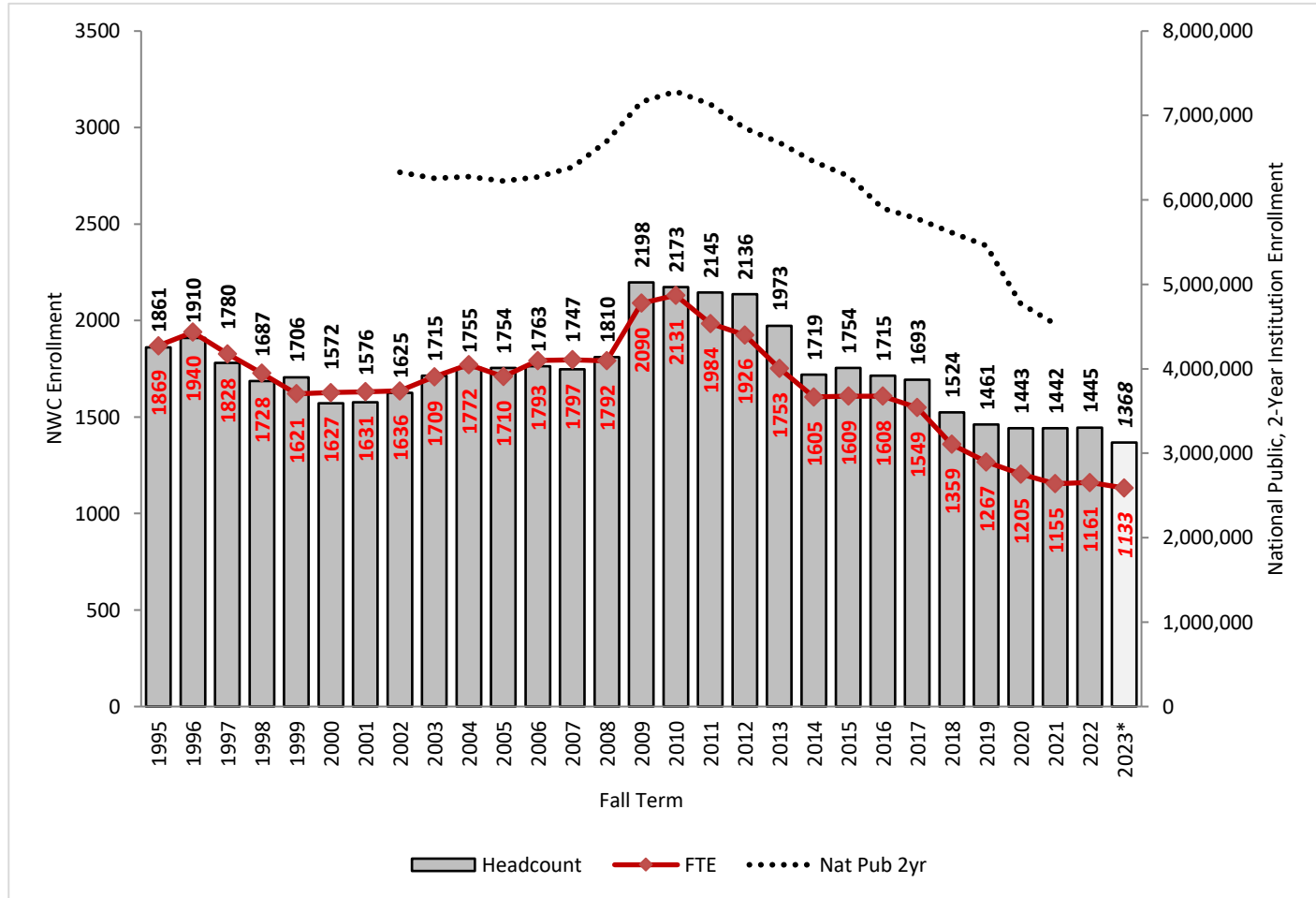
<b>Age</b>	<b>Headcount</b>	<b>% of Total</b>
<18	445	33%
18-21	577	42%
22-29	171	13%
>=30	175	13%
<i>Total</i>	<i>1368</i>	<i>100%</i>

<b>Concurrent/Dual Enrolled</b>	<b>Headcount</b>	<b>% of Total</b>
Concurrent/Dual	429	31%
Non-Concurrent/Dual	939	69%
<i>Total</i>	<i>1368</i>	<i>100%</i>

<b>Program Areas with 10 Highest Numbers of Degree-Certificate Majors</b>	<b>23/FA</b>	<b>22/FA</b>
General Studies	124	131
Health Science (Non-Nursing)	112	149
Business	73	77
Agriculture	72	80
Nursing	62	74
Criminal Justice	54	43
Biology (including Pre-Professional Sciences)	53	51
Education	47	67
Art/Graphic Design	42	31
Welding Technology	28	36

\*Fall 2023 enrollment is preliminary, as of 9/27/2023.  
Official fall enrollment will be available in February 2024.

## Historical Fall Enrollment



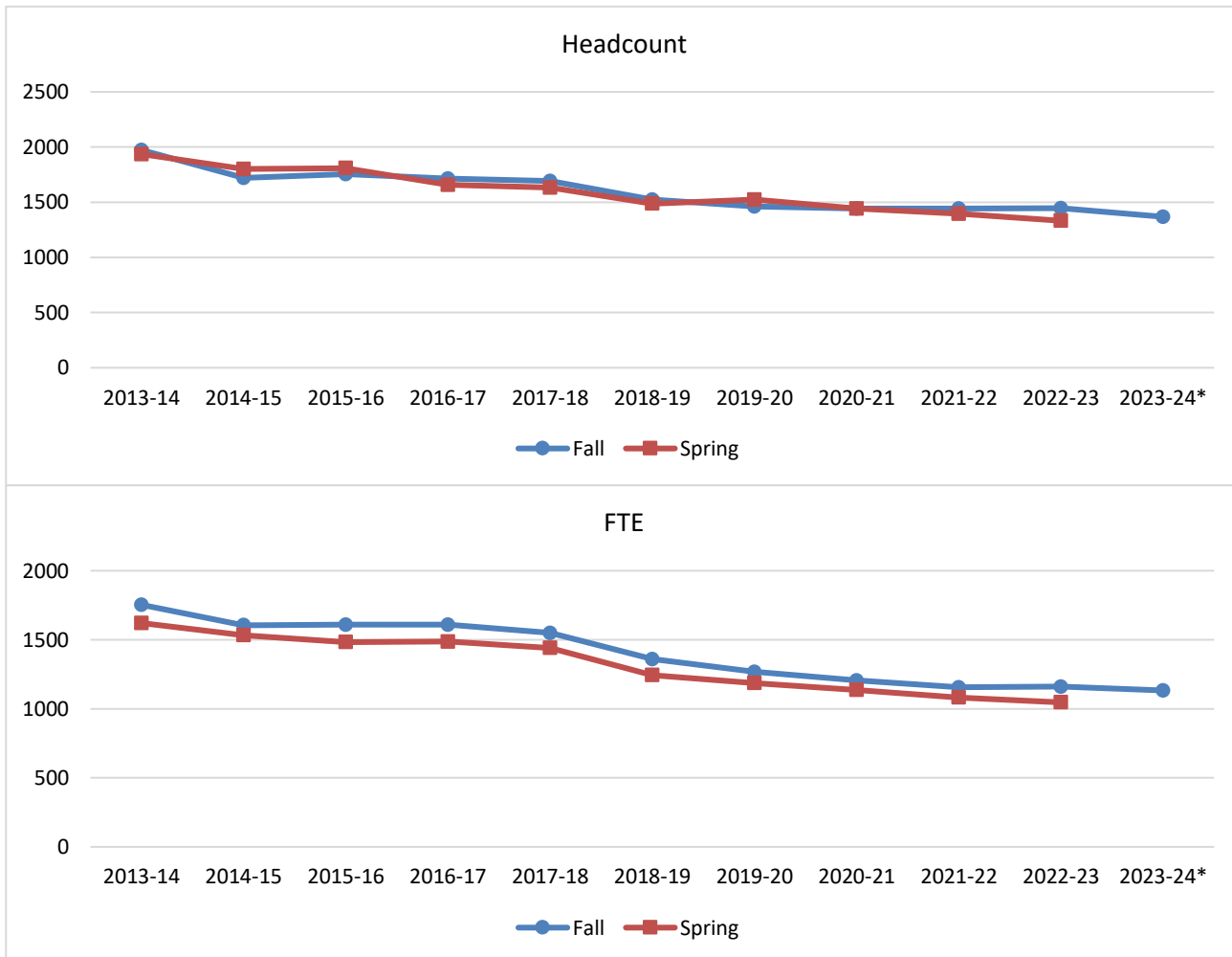
*\*2023 enrollment is preliminary, as of 9/27/2023, and will increase before the end of term. Enrollment for all previous terms is final.*

**Definition:** **Headcount** is the unduplicated number of students who were enrolled (a student is counted once, no matter how many credits the student is taking).  
**Full-time equivalent (FTE)** enrollment is the number of credits in which all students are enrolled divided by 12 (the number that represents a full-time load for one term).

**Summary:** Prior to NWC's enrollment peak in Fall 2009 and Fall 2010, FTE followed the unduplicated headcount closely. Since then, FTE has been notably lower than the headcount. This is due to the increasing percentage of students taking part-time loads, in particular high school concurrent and dual students.

Enrollment numbers reported by the National Center for Education Statistics (U.S. Department of Education) show that enrollment for all public, two-year institutions follows a similar path to NWC's for most years with a more dramatic decrease in Fall 2020. (Only Fall 2002 through Fall 2021 is available at this point nationally.)

## Fall and Spring Enrollment



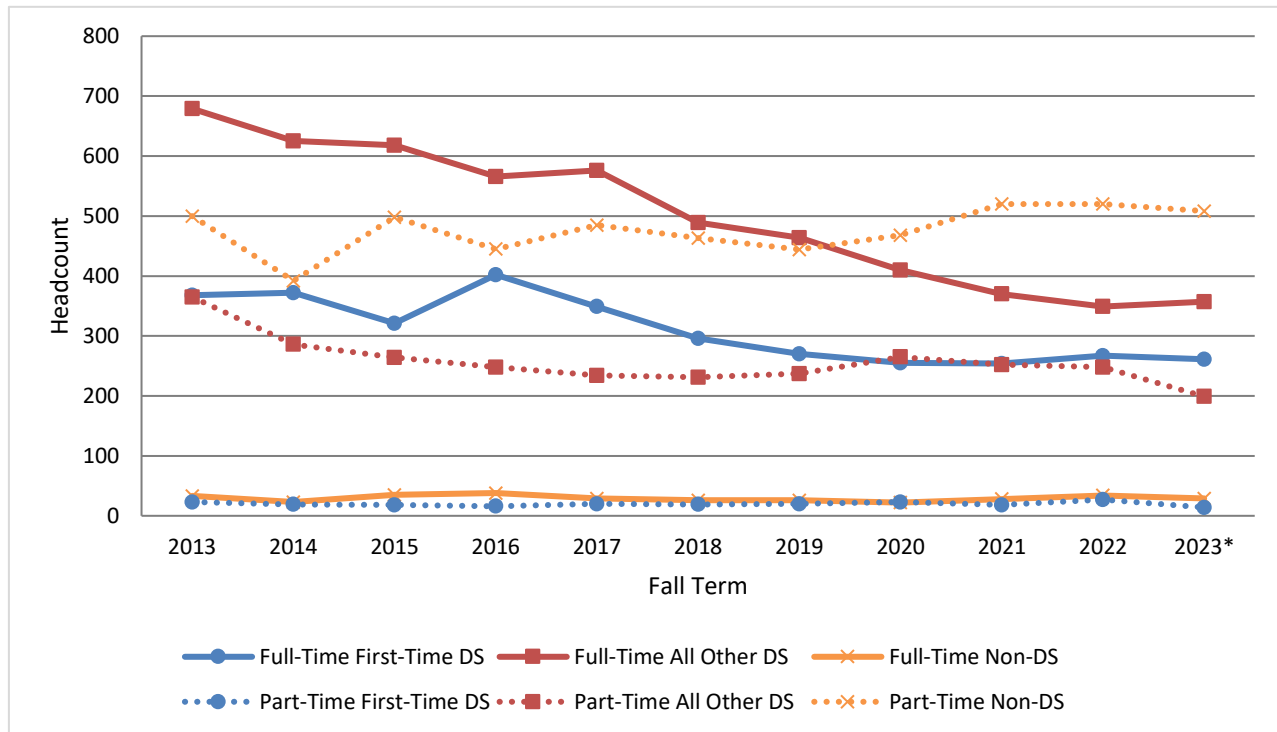
\*2023 enrollment is preliminary, as of 9/27/2023.

**Summary:** Over the past decade, headcount has averaged a 1% decrease from the fall to the spring of an academic year, though from year to year, spring has fluctuated between being a little higher to a little lower than the preceding fall.

Full-time equivalent (FTE) has consistently been lower in the spring than the fall. On average, spring FTE has been 7% lower than the fall.

Therefore, though a similar number of students enroll in both terms of an academic year, students tend to take fewer credits in the spring than in the fall.

## Enrollment by First-Time and Degree-Seeking Status



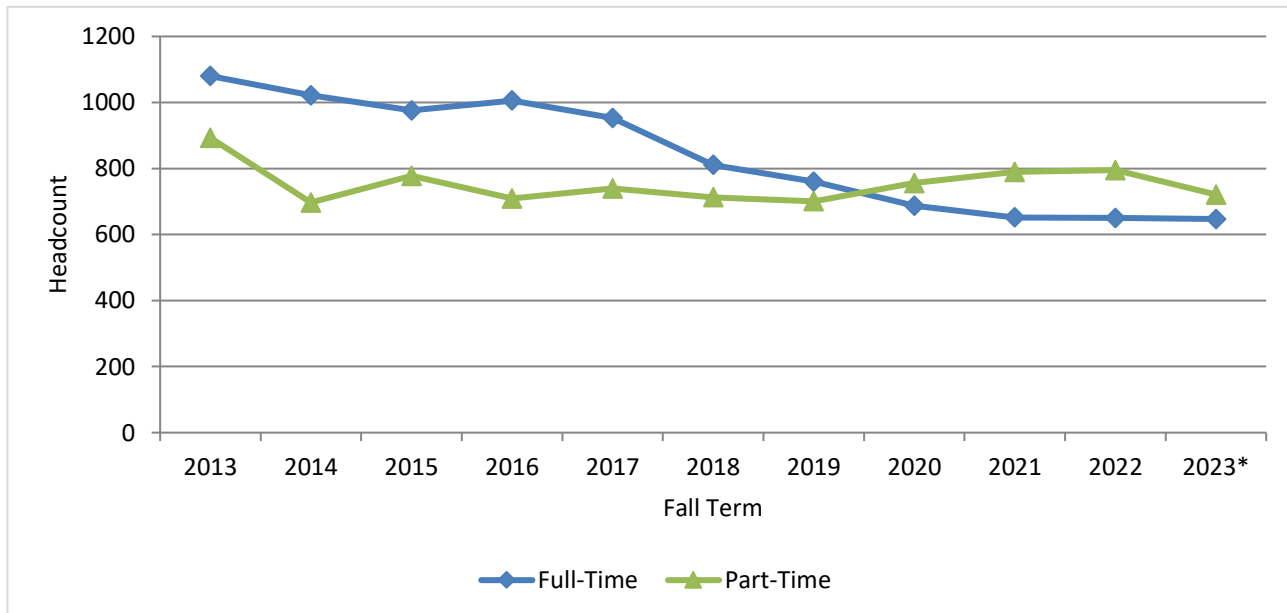
\*2023 enrollment is preliminary, as of 9/27/2023.

**Definition:** **Degree-seeking (DS) students** are those majoring in either a degree and/or a certificate program. **First-time students** are students who have not enrolled in college since graduating from high school (they may have taken concurrent/dual courses in high school). **All other degree-seeking students** include returning and transfer students. **Non-degree-seeking students** are not pursuing a degree or certificate (includes concurrent/dual enrolled high school students).

**Summary:** Historically, full-time "all other degree-seeking students" was the largest group of students. Fall 2020 marked the first year where part-time enrollment was larger than full-time enrollment. In Fall 2023, the largest group is **part-time non-degree-seeking students** (primarily concurrent and dual students), making up 37% of total population, followed by **full-time "all other degree-seeking students"** (returning and transfer students), making up 26% of total population. **Full-time, first-time degree-seeking students** account for 19% of total enrollment, the third largest group.

	<i>Percent of Total Enrollment - Fall 2023</i>
<b>Full-Time</b>	
First-Time Degree-Seeking	19%
All Other Degree-Seeking	26%
Non-Degree-Seeking	2%
<b>Part-Time</b>	
First-Time Degree-Seeking	1%
All Other Degree-Seeking	15%
Non-Degree-Seeking	37%

## Enrollment by Full-Time and Part-Time Status



*\*2023 enrollment is preliminary, as of 9/27/2023.*

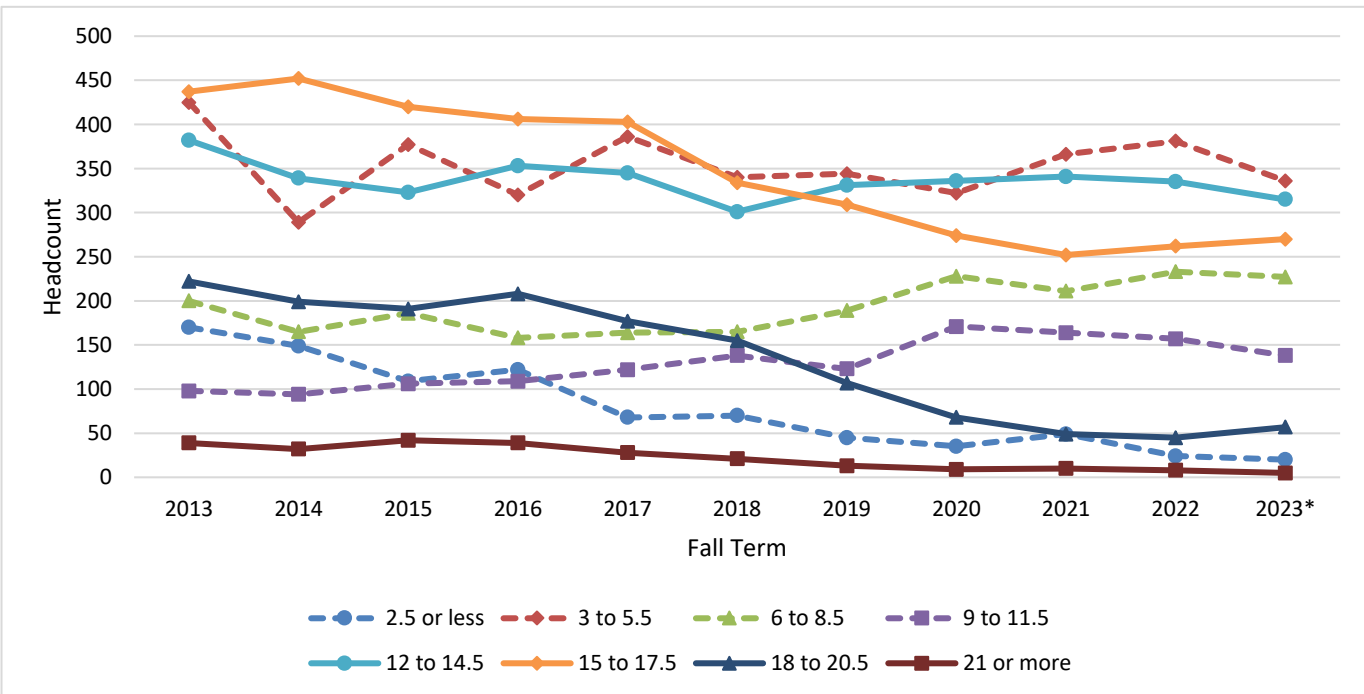
**Definition:** A **full-time student** is enrolled in 12 credits or more during an enrollment term. A **part-time student** is enrolled in 0.5 to 11.5 credits. Both degree-seeking and non-degree-seeking students are included in this measure.

**Summary:** In Fall 2013, full-time students accounted for 55% of total headcount. Part-time students became the majority population starting in Fall 2020. In Fall 2023, full-time make up 47% of enrollment.

Students are enrolling in fewer credits than they did ten years ago. However, students in Fall 2023 enrolled in larger credit loads than they did in Fall 2022.

Some of the increase in part-time enrollment is due to an increase in concurrent and dual enrollment over this time.

## Enrollment by Credit Hour Load



\*2023 enrollment is preliminary, as of 9/27/2023.

**Definition:** This measure shows how many students (unduplicated headcount) are enrolled in each **credit hour range**.  
*Full-time loads - solid lines on graph; part-time loads - dashed lines.*

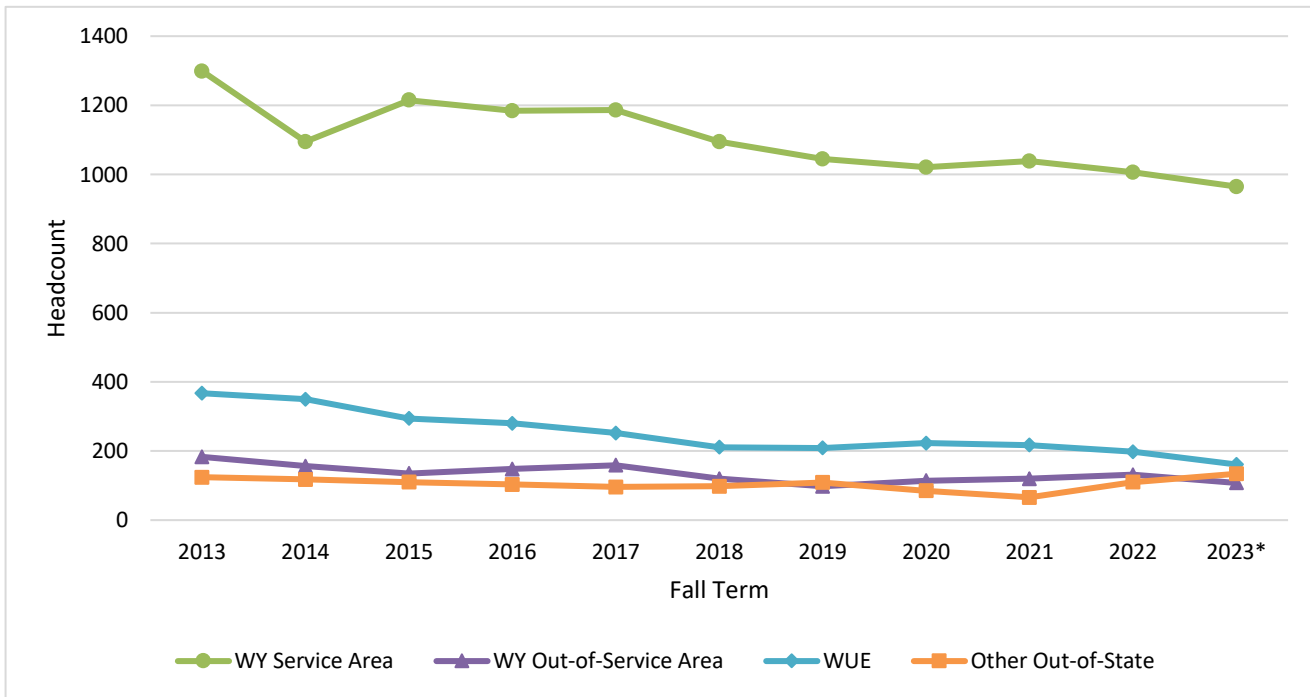
**Summary:** Over the past decade, the largest numbers of students enrolled in 3 to 5.5 credits, 12 to 14.5 credits, and 15 to 17.5 credits.

In Fall 2023, we are seeing increases in the 15-20.5 credit ranges and decreases in the part-time ranges, particularly in the 3-5.5 credit range. This has led to an increase in the average credits enrolled per student, compared to Fall 2022.

Students paid the same tuition rate for 12 to 20 credits for all years before Fall 2019. In Fall 2019, Wyoming community colleges changed the tuition flat rate (rate cap) to 15 to 20 credits. In Fall 2021, this rate cap was eliminated completely, so students then paid for all credits enrolled. This change may have impacted the number of credits in which students enroll.



## Enrollment by Residence



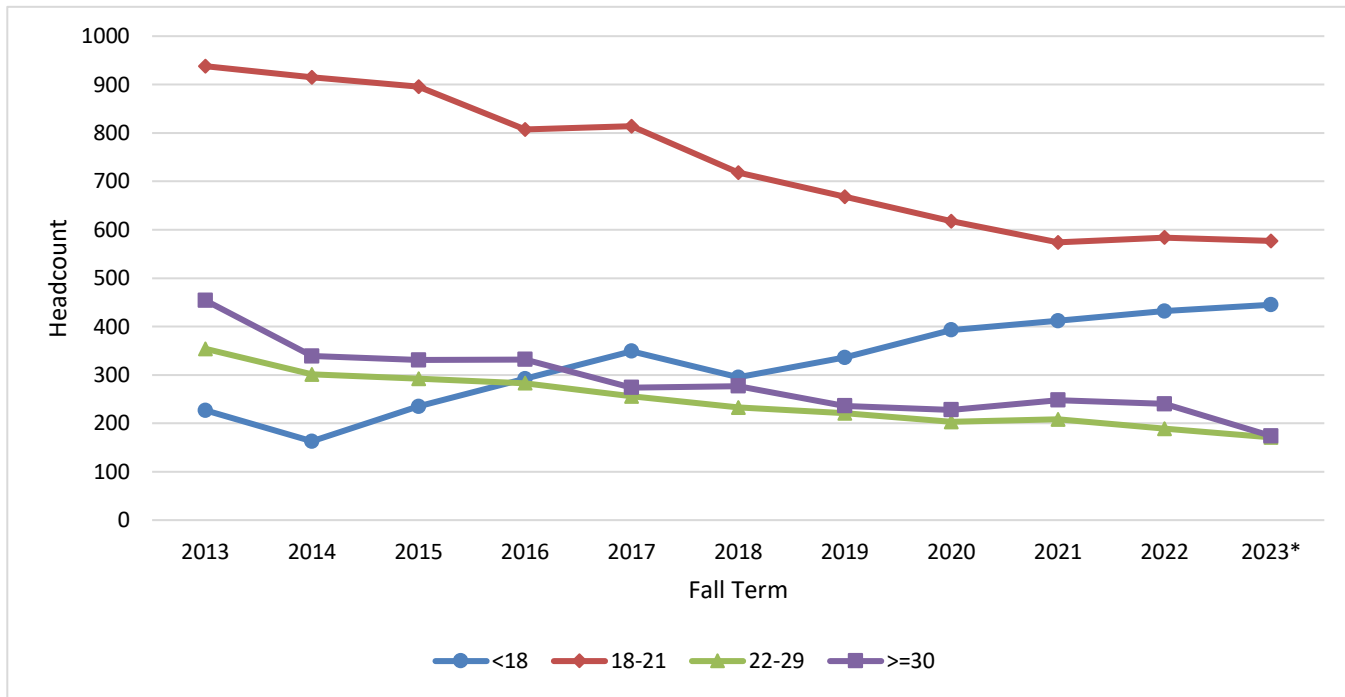
*\*2023 enrollment is preliminary, as of 9/27/2023.*

**Definition:** Residence location is determined by a student's **residence county and state**. **Service area** consists of Park, Big Horn, and Washakie counties in Wyoming. **Western Undergraduate Exchange (WUE)** states consist of Alaska, Arizona, California, Colorado, Hawaii, Idaho, Montana, Nevada, New Mexico, North Dakota, Oregon, South Dakota, Utah, Washington, and the US Pacific Territories and Freely Associated States (Nebraska residents are also given the WUE rate at NWC). Students from other countries and US states outside Wyoming and WUE states are included in **Other Out-of-State**.

**Summary:** In Fall 2023, 71% of students came from NWC's service area, 12% came from WUE states, 10% came from out-of-state or international (non-WUE), and 8% came from Wyoming counties outside NWC's service area.

After the decline in international enrollment due to COVID-19, the Welcome to Wyoming Scholarship was offered for the first time in Fall 2022, which boosted Other Out-of-State (including international and athletic) enrollments.

## Enrollment by Age



*\*2023 enrollment is preliminary, as of 9/27/2023.*

**Definition:** This measure shows unduplicated headcount enrollment by **age**.

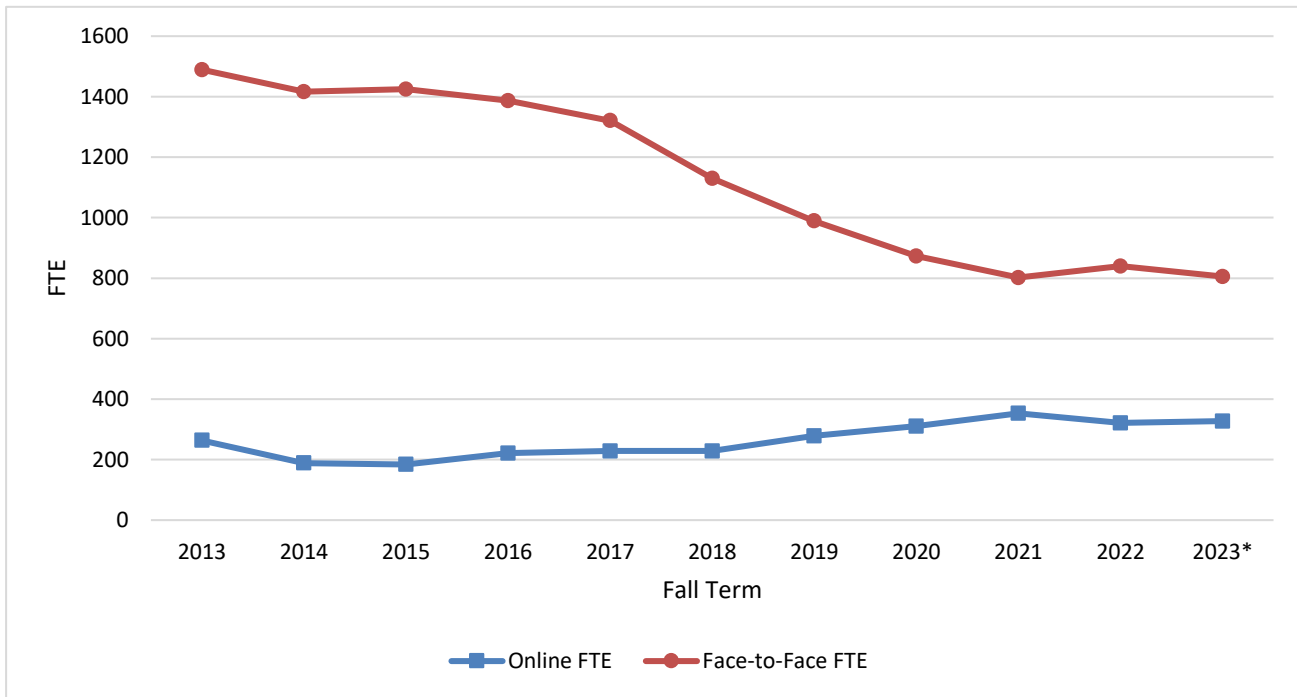
**Summary:** In Fall 2023, the median age is 18 years, and the average (mean) age is 22. We are seeing a decrease in the number of students 30 years and over this year.

The number of students under 18 has increased over the past ten years, which corresponds to the increase of concurrent and dual enrollment.

**Percent of total population:**

- 18-21 years: 42%
- Less than 18 years: 33%
- Greater than or equal to 30 years: 13%
- 22-29 years: 13%

## Enrollment by Online and Face-to-Face



\*2023 enrollment is preliminary, as of 9/27/2023.

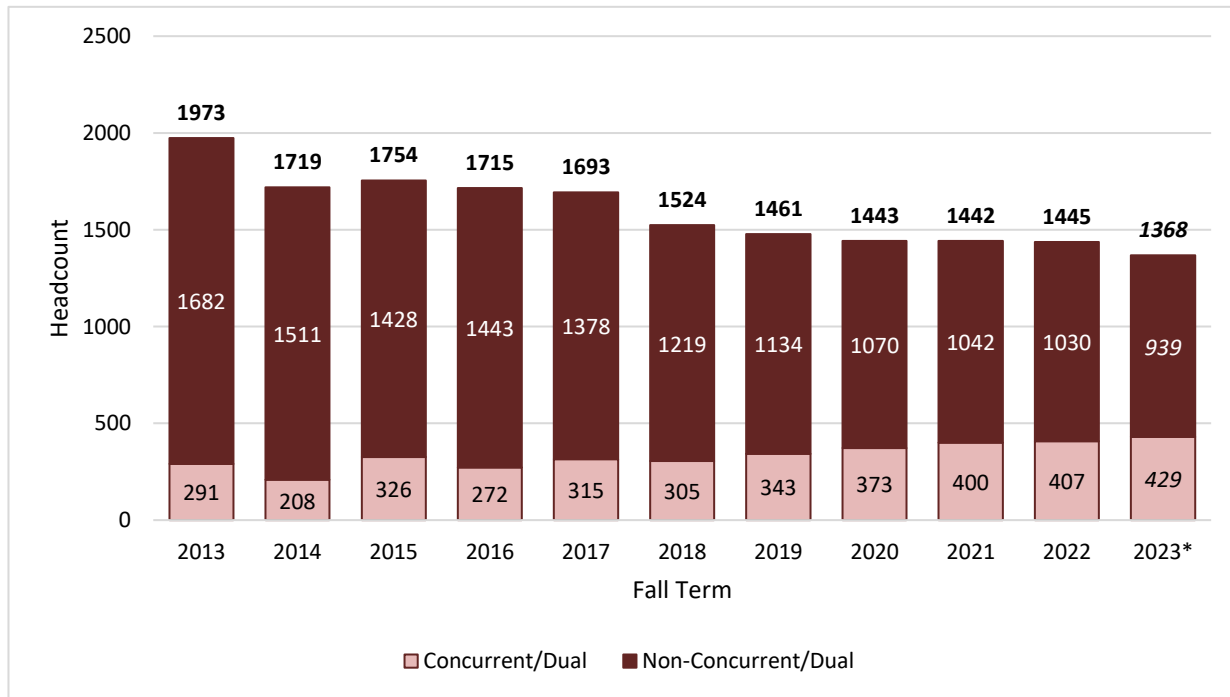
Definition: **Online** courses are taken completely through distance methods. **Face-to-face** courses are partially or fully taught in person.

Summary: *Disclaimer: Due to the coronavirus pandemic, some Fall 2020 classes originally scheduled to be face-to-face had to use alternative delivery methods to accommodate social distancing. They are still considered to be face-to-face for this chart. This chart represents enrollment by how classes were originally scheduled.*

Enrollment in courses scheduled to be delivered online has increased 24% over the past ten years.

In Fall 2023, FTE (credits/12) for online courses made up 29% of total FTE, compared to 15% in Fall 2013.

## Enrollment by Concurrent and Dual - Fall



\*2023 enrollment is preliminary, as of 9/27/2023.

**Definition:** **Concurrent** students are enrolled in credit courses taught in high schools by college-approved high school teachers. **Dual** students are enrolled in credit courses taught by NWC faculty.

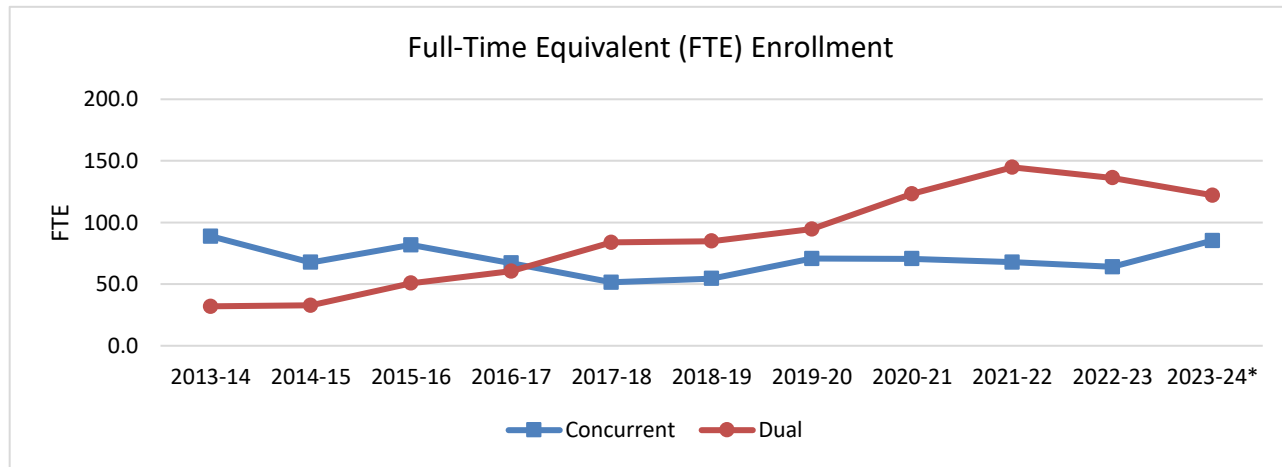
**Summary:** Concurrent enrollment began with a pilot program in Spring 2009 and was fully implemented at all Big Horn Basin (BHB) high schools in Fall 2009. Dual enrollment has been available prior to 2009.

All service area high schools participate in dual and concurrent enrollment. Homeschooled students began participating in dual and concurrent enrollment in 2014-15.

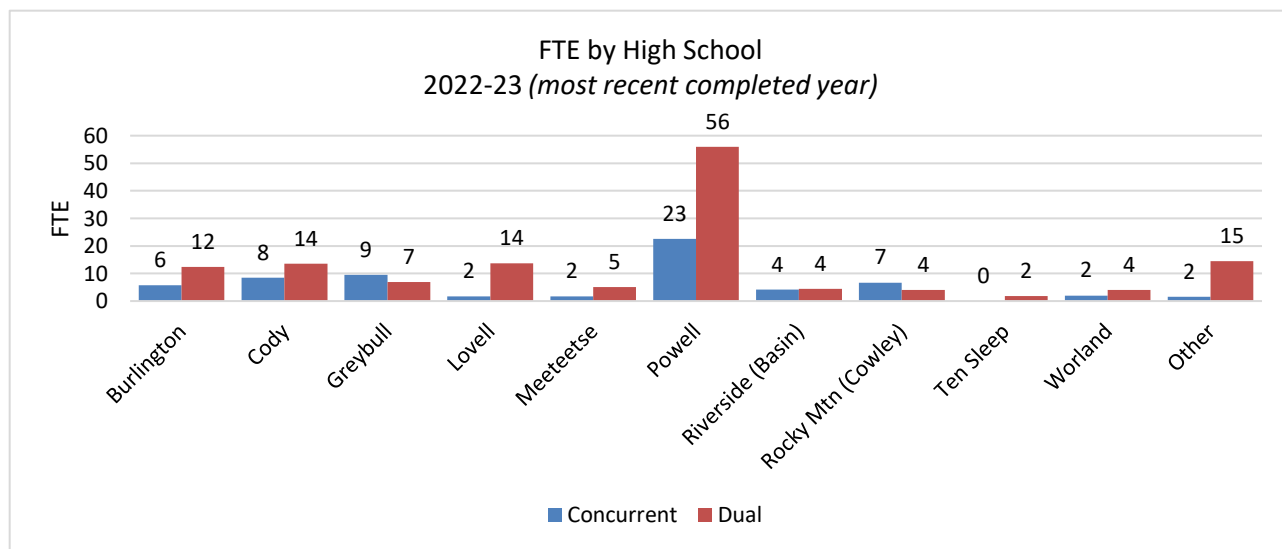
In Fall 2023, concurrent and dual enrollment headcount makes up 31% of total headcount, compared to 15% in Fall 2013.

Concurrent and dual credits make up 18% of Fall 2023 credits, compared to 6% in Fall 2013.

## Concurrent and Dual Enrollment Breakdown - Annual



\*2023-24 concurrent FTE is preliminary and only represents Fall 2023.

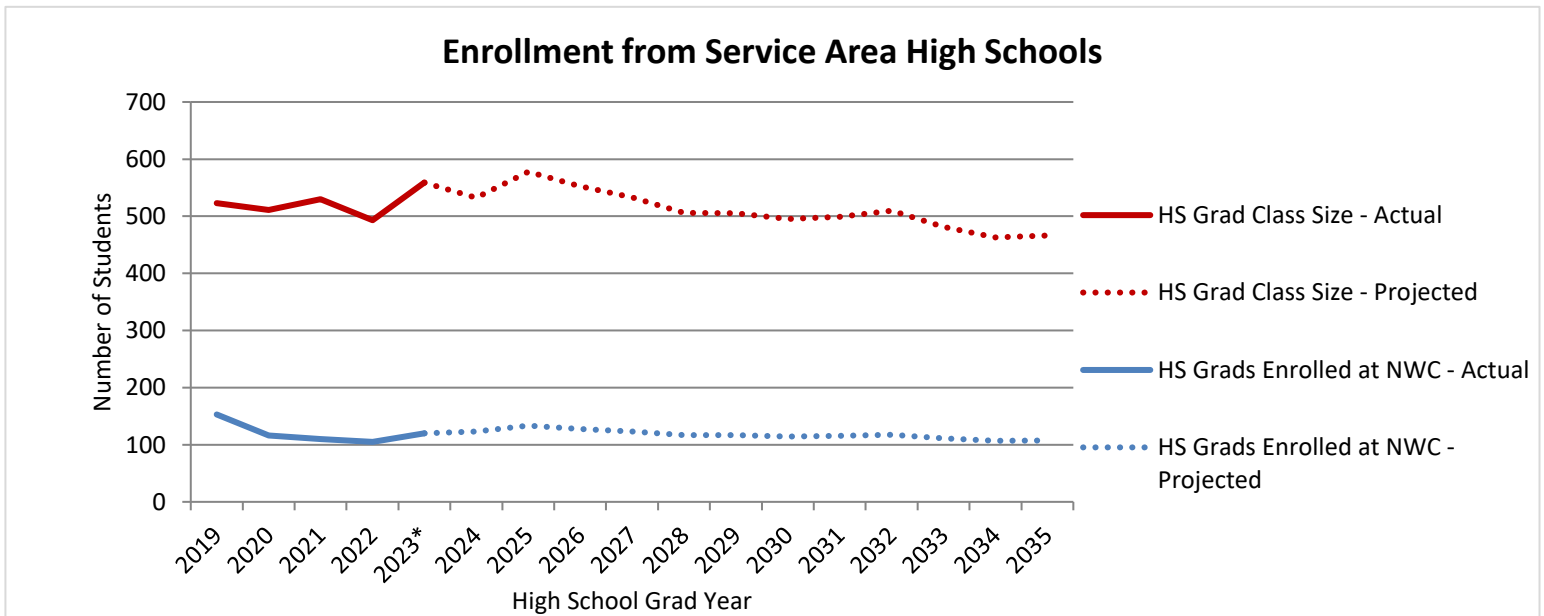


**Definition:** **Concurrent** students are enrolled in credit courses taught in high schools by college-approved high school teachers. **Dual** students are enrolled in credit courses taught by NWC faculty. **Annual full-time equivalent (FTE)** is the sum of enrolled credits divided by 24.

**Summary:** Dual enrollment FTE has more than tripled since 2012-13.

Concurrent enrollment is expected to increase for 2023-24, due to the increased number of high school faculty approved to teach concurrent classes on high school campuses.

## Service Area High School Graduates - Projected



\*2023 enrollment is preliminary since the 2023-24 academic year is still in progress.

<b>Past 5-Year Ave (% of HS Grads Enrolled at NWC):</b>	<b>23%</b>
---	------------

**Definition:** This measure shows actual and projected numbers of:  
 - **service area high school graduating class sizes**  
 - **students from the high schools who attended (or are projected to attend) NWC** within a year following high school graduation.

Actual graduating class sizes were obtained from final high school transcripts. Projected class sizes are from the Wyoming Department of Education's current reported class sizes adjusted for average retention and graduation rates over the most recent three years available. The projected number of graduates who will enroll at NWC was calculated by taking the average enrollment yield over the past five years and multiplying by the projected class sizes.

Service area high schools are the public high schools within Park, Big Horn, and Washakie counties, including Shoshone Learning Center (Powell) and Heart Mountain Academy (Cody).

**Summary:** Over the past five years, 23% of service area high school graduates have enrolled at NWC within a year of graduation. Assuming this enrollment yield continues, NWC may see an increase in enrollment from service area high schools through 2025 (projected 133 graduates enrolling) and then a gradual decrease through 2035 (projected 108 graduates enrolling). This corresponds with the projected statewide and nationwide decrease in high school graduate numbers.

## Service Area High School Graduates - By High School

**Percent of High School Graduates Enrolled at NWC**

School	2019	2020	2021	2022	2023*	5-Yr Ave
Burlington	35%	10%	21%	32%	23%	25%
Cody	34%	25%	14%	14%	21%	21%
Greybull	15%	24%	22%	17%	9%	17%
Heart Mountain Academy			16%	5%	22%	14%
Lovell	28%	31%	23%	46%	32%	32%
Meeteetse	13%	0%	0%	0%	25%	7%
Powell	46%	36%	34%	32%	27%	35%
Riverside (Basin)	16%	17%	16%	14%	20%	16%
Rocky Mtn (Cowley)	43%	20%	30%	26%	28%	30%
Shoshone Learning Center	46%	0%	8%	100%	0%	22%
Ten Sleep	0%	0%	0%	50%	0%	6%
Worland	10%	9%	11%	8%	13%	10%
<b>Average</b>	<b>29%</b>	<b>23%</b>	<b>21%</b>	<b>21%</b>	<b>21%</b>	<b>23%</b>

\*2023 information is preliminary since the 2023-24 academic year is still in progress.

<b>Blue</b> - percent of graduates enrolled at NWC was <b>HIGHER</b> than service area average for year.
<b>Orange</b> - percent of graduates enrolled at NWC was <b>LOWER</b> than service area average for year.

**High School Graduating Class Sizes**

School	2019	2020	2021	2022	2023
Burlington	17	10	19	19	22
Cody	122	126	109	132	136
Greybull	47	34	27	29	33
Heart Mountain Academy			19	22	9
Lovell	47	32	52	41	56
Meeteetse	8	9	8	9	8
Powell	114	128	137	110	138
Riverside (Basin)	19	24	19	22	20
Rocky Mtn (Cowley)	30	30	30	23	32
Shoshone Learning Center	13	13	13	4	8
Ten Sleep	10	7	6	4	7
Worland	96	98	91	78	90
<b>Average</b>	<b>523</b>	<b>511</b>	<b>530</b>	<b>493</b>	<b>559</b>

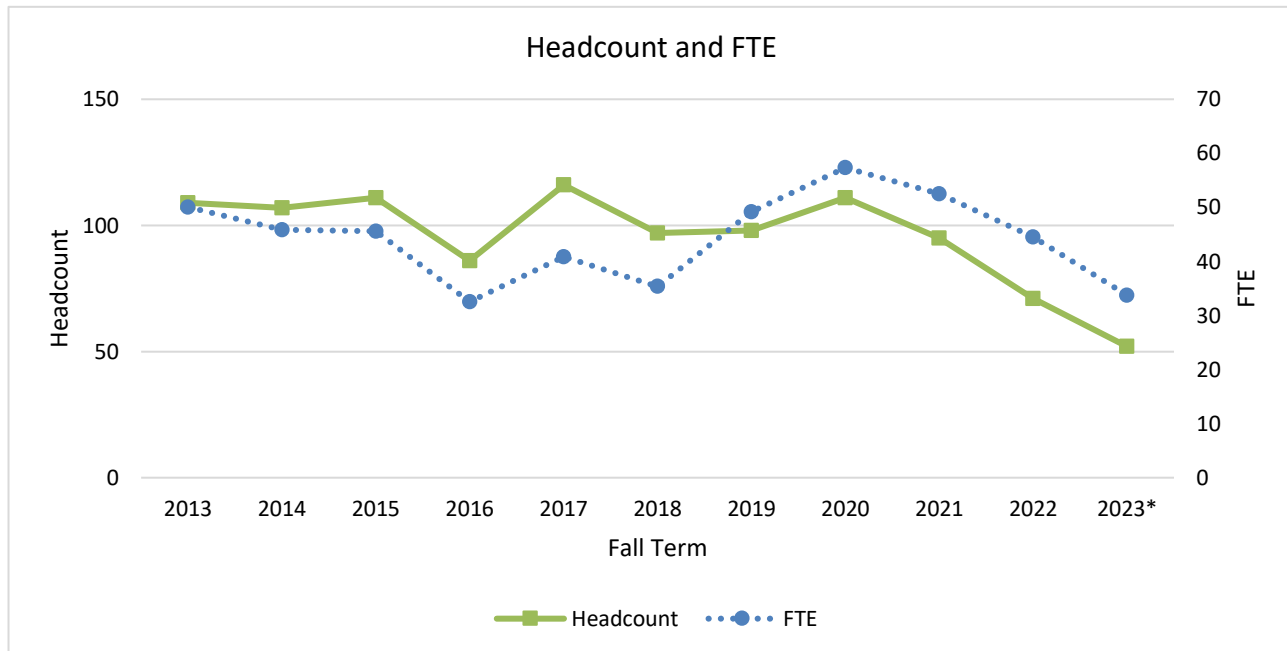
Source: NWC Admissions Office (High School Transcripts)

**Definition:** This measure shows the percentage of **high school graduates who enrolled at NWC** in the academic year following high school graduation. Service area includes Big Horn, Park, and Washakie counties.

**Summary:** Over the past five years, 23% of service area high school graduates have enrolled at NWC within a year of graduation.

- **Highest:** Powell (35% of grads), Lovell (32%), Rocky Mountain (Cowley) (30%)
- **Lowest:** Ten Sleep (6%), Meeteetse (7%), Worland (10%)

## Enrollment at Cody Center



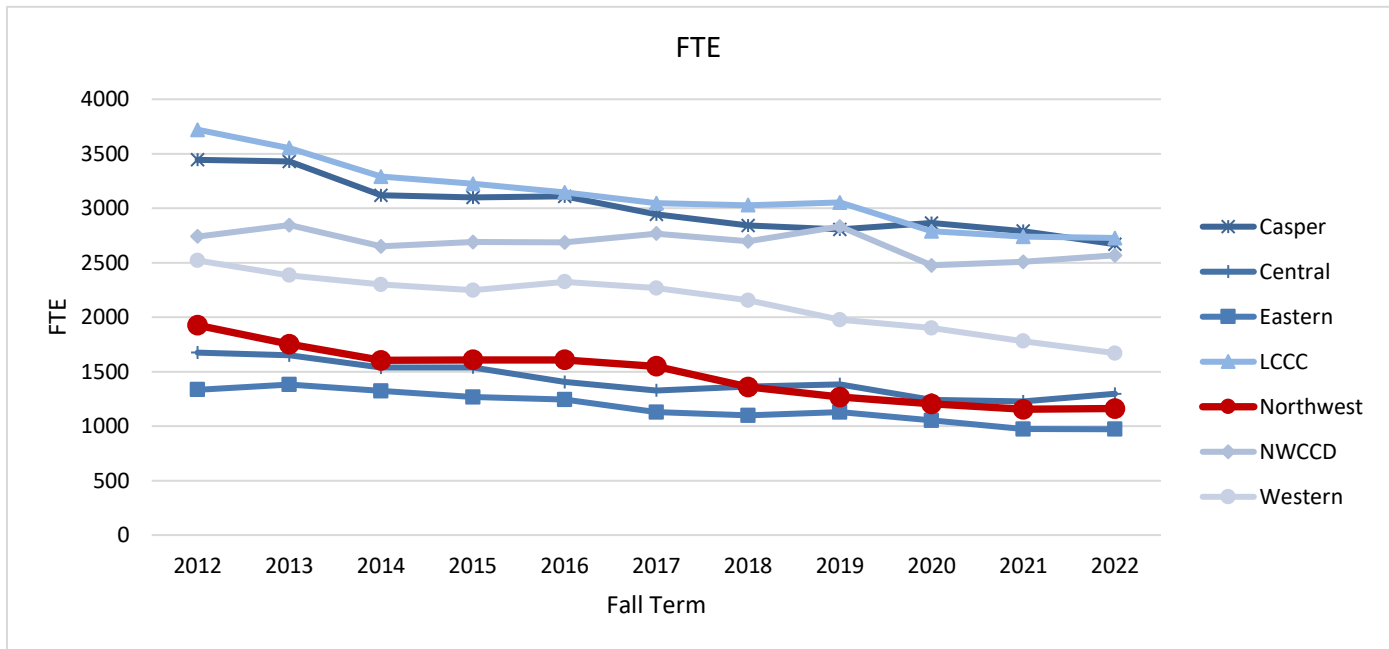
*\*2023 enrollment is preliminary, as of 9/27/2023.*

**Definition:** This measure counts headcount and FTE for **students enrolled in credit classes at the Cody Center**. Concurrent enrollment (taken by high school students in the high schools) and non-credit enrollment are not included.

**Summary:** Since 2019, Cody Center FTE has been greater than the headcount, indicating students are taking larger credit loads, due to their participation in academic programs based out of the Cody Center. NWC has developed non-credit programs in Cody and transitioned them to credit programs, particularly in allied health areas.



## Wyoming Community College FTE Enrollment - Fall



Fall 2022 statewide results not available until February 2023.

Source: Wyoming Community College Commission Enrollment Reports

**Definition:** This measure shows a comparison of **fall student full-time equivalent (FTE)** enrollment for NWC and the other six Wyoming community colleges.

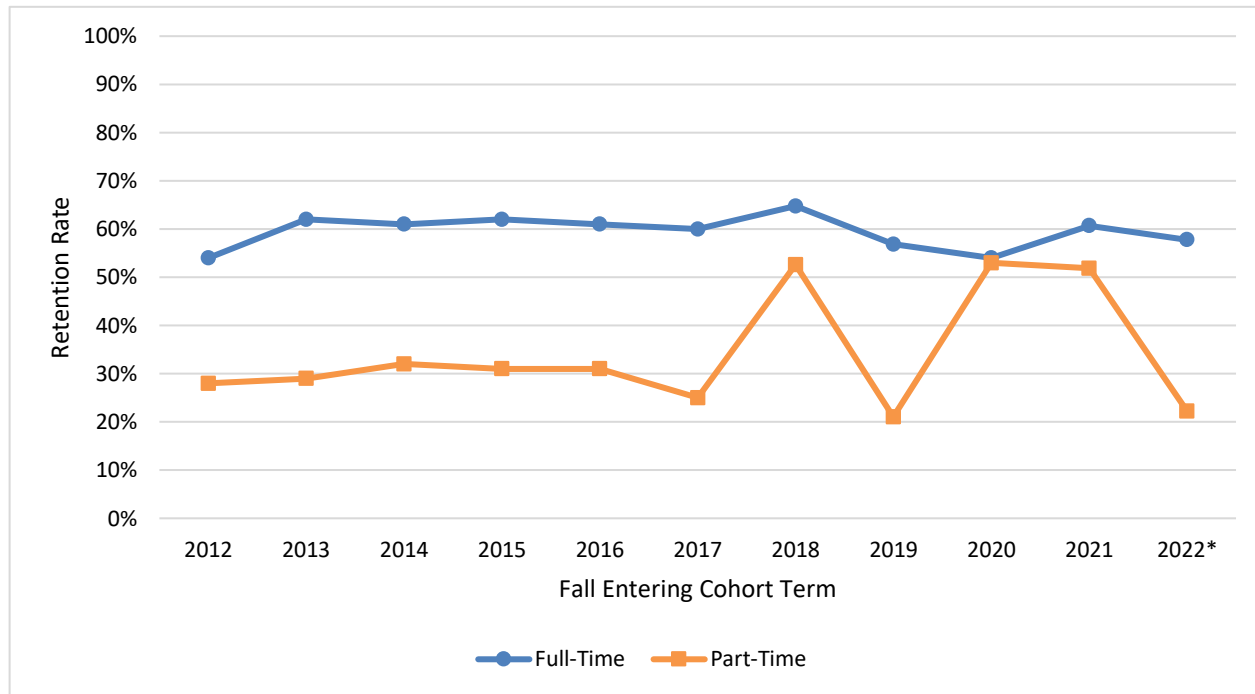
**Summary:** In Fall 2022, NWC's FTE accounted for 9% of statewide FTE and NWC's headcount accounted for 8% of statewide headcount.

Though NWC's enrollment is among the lowest in Wyoming, students tend to take larger credit loads at NWC than at the other colleges, which boosts NWC's FTE.

*\*Note percent changes are based on Fall 2021 as most recent official enrollment. Fall 2022 results are not available until February 2023.*

<u>Headcount</u>	<u>NWC</u>	<u>All Colleges</u>	<u>FTE</u>	<u>NWC</u>	<u>All Colleges</u>
1-year	0%	-2%	1-year	0%	-1%
5-year	-15%	-13%	5-year	-25%	-13%
10-year	-32%	-24%	10-year	-40%	-25%

## Fall-to-Fall Retention Rate



\*Fall 2022 retention rate is preliminary, as of 9/27/2023.

Source: WCCC Performance Indicators Report (2016 forward; statewide changed method of identifying first-time cohort with 2020 cohort); IPEDS Fall Enrollment Survey (2015 and prior)

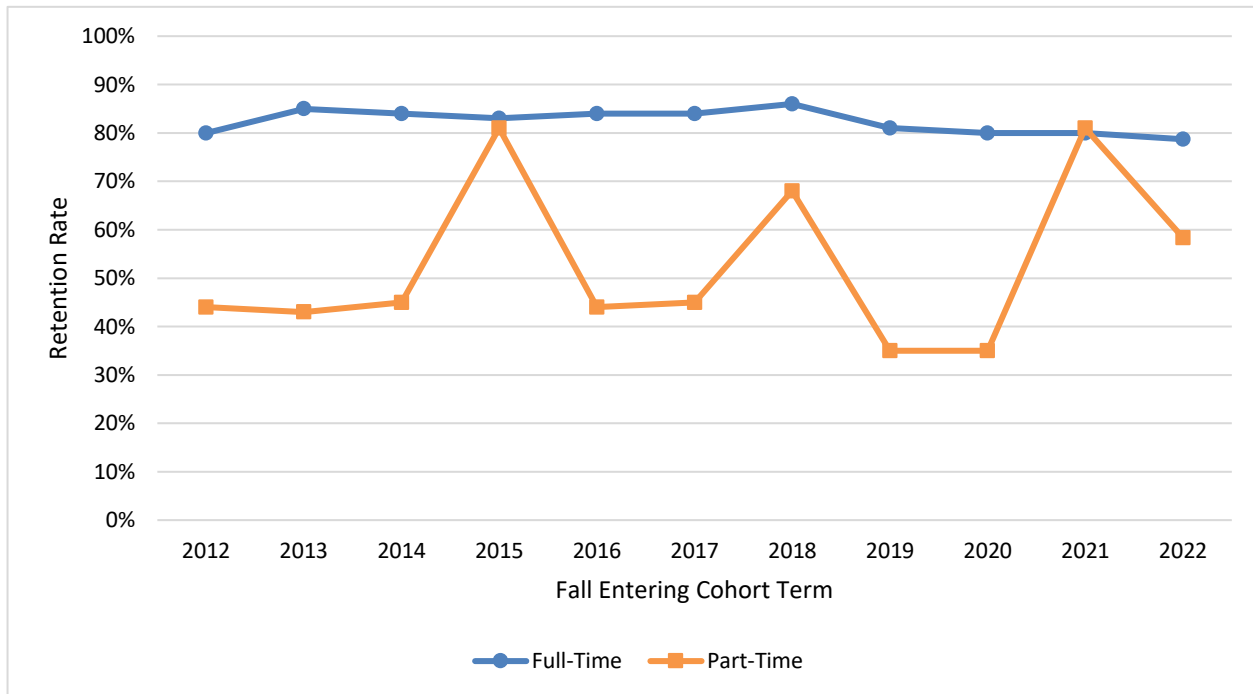
**Definition:** **Fall-to-fall retention rate** is the percentage of students who enrolled in college for the first time in one fall term (cohort fall) and either are still enrolled in or completed their program of study by the following fall term at NWC. This measure is only calculated for **first-time, degree-seeking students**.

**Summary:** Preliminary results show that 58% of the 263 full-time, first-time, degree-seeking students in Fall 2022 returned to NWC or graduated by Fall 2023. Statewide and national Fall 2022 retention rates are not yet available for comparison.

NWC has commonly ranked among the highest for full-time retention rate of the Wyoming colleges. NWC's retention rate has typically been comparable to national rates, which have ranged from 60-63% during the past decade.

NWC's preliminary part-time retention rate for the Fall 2022 cohort is 22%. The part-time, first-time, degree-seeking cohort is small, most recently 36 students, so the difference of a few students makes a large change in the retention rate. Part-time retention rates tend to be lower than full-time nationwide.

## Fall-to-Spring Retention Rate

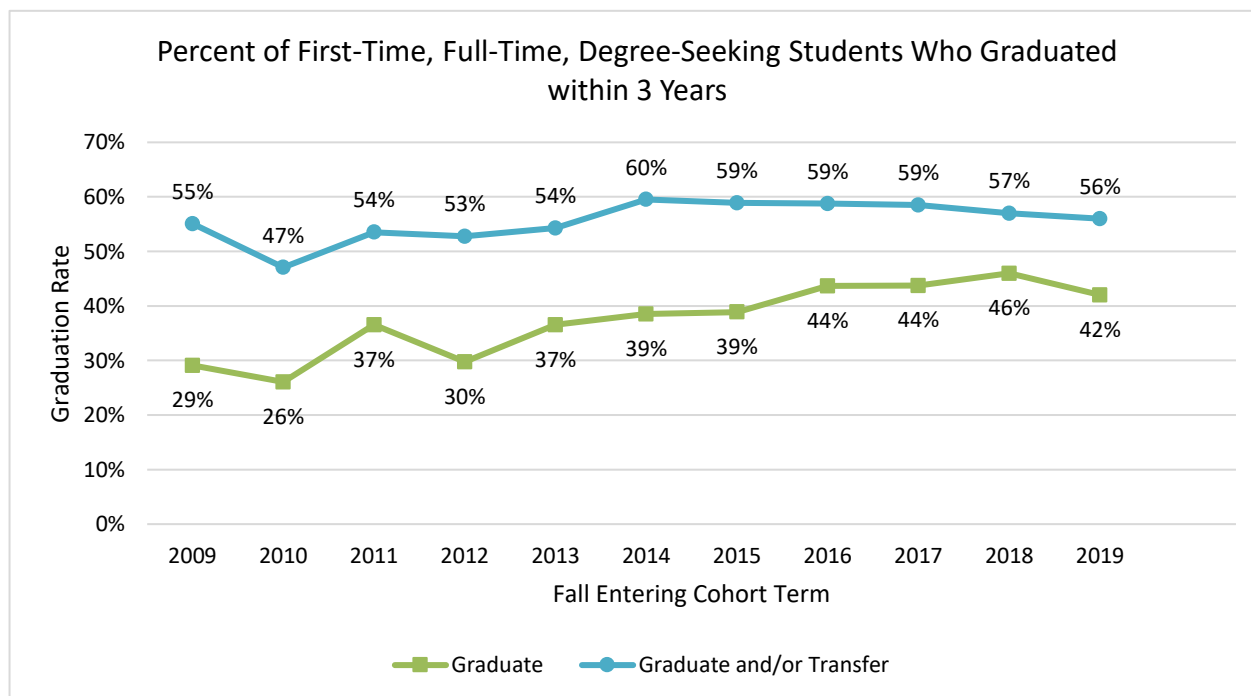


**Definition:** **Fall-to-spring retention rate** is the percentage of students who enrolled in college for the first time in one fall term (cohort fall) and either are still enrolled in or completed their program of study by the following spring term at NWC. This measure is only calculated for **first-time, degree-seeking students**.

**Summary:** Of Fall 2022 full-time, first-time, degree-seeking students, 79% returned in Spring 2023. The full-time fall-to-spring retention rate has been in the upper 70% to mid-80% range since NWC has been tracking it.

Part-time fall-to-spring retention has typically been in the mid-30 to mid-40% range, with three spikes in the past ten years. The part-time, first-time, degree-seeking cohort is small, most recently 36 students, so the difference of a few students makes a large change in the retention rate.

## Graduation Rates



Source: IPEDS Graduation Rates Survey (2017 cohorts and before); 2018 cohorts and after, National Community College Benchmark Project (calculated using same method as for IPEDS)

**Definition:** **Graduation rate** (a.k.a. "**completion rate**") is the percentage of **first-time, full-time, degree-seeking students** who enter in one fall term (cohort fall) and graduate in a degree or certificate program within 150% of normal time to completion (3 years for an associate degree).

**Summary:** NWC's graduation rate has climbed over the past decade, reaching the highest on record several times. The Fall 2019 cohort graduated by Summer 2022 at a still high rate (42%), though lower than the previous three cohorts. It is likely that the COVID-19 pandemic impacted this rate.

During the past decade, NWC incorporated retention and completion initiatives, such as 15-to-Finish, first-year seminars, the Advising Center, the HERO grant, co-requisite math and English courses, and Help Alerts.

NWC's graduation rates are typically higher than or equal to the state average.

National graduation rates for the most recent ten years at public, two-year institutions increased from 21% to 31%, as institutions across the country engage in completion initiatives. NWC has been well above the national average every year.

Some students' primary goal is to transfer from NWC rather than complete a degree, so by combining the completion and transfer rates, we see that 56% of Fall 2019 entering students either completed their program of study or transferred to another institution by the end of Summer 2022.