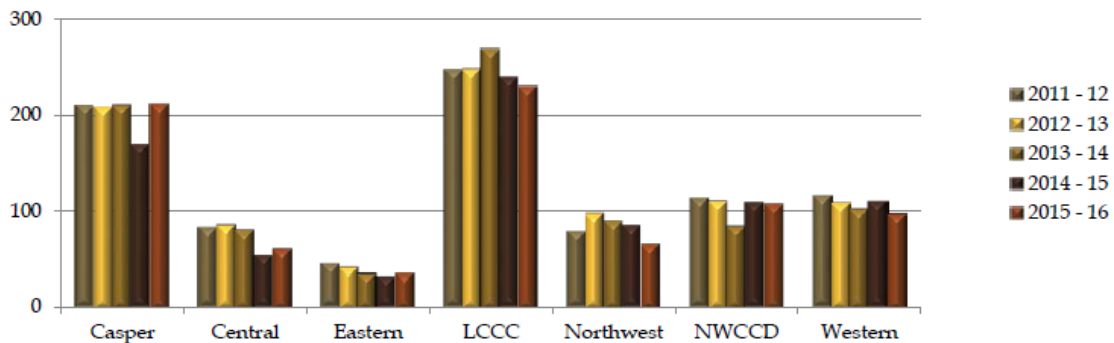


To: Stefani Hicswa
 From: Lisa Smith
 RE: Northwest College Transfer Student Performance at University of Wyoming – 2015-16
 Date: December 22, 2016

Of 2015-16 Northwest College degree-seeking students who did not return to NWC in Fall 2016, **27% transferred** to another institution. Of these **77% transferred to a four-year** institution and **23% to a two-year** institution. The top five four-year transfer institutions were University of Wyoming (UW), Montana State University – Billings, Montana State University, Black Hills State University, and University of Montana.

Every year, UW presents summaries of Wyoming community college transfer students that enrolled in the previous academic year. Highlights from the 2015-16 report to NWC are presented below.

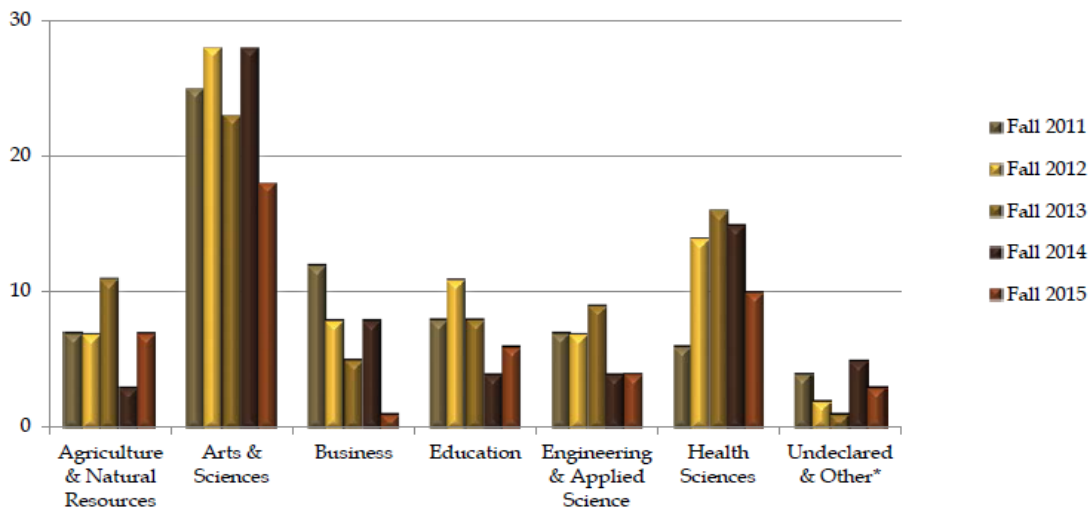
HEADCOUNT OF WYOMING COMMUNITY COLLEGE TRANSFERS – 2011-12 TO 2015-16



Source: UW New Transfer Students Report – 2015-16, Figure 1

Over the past five years, an **average of 84 students have transferred credits to UW each year** with NWC as their most recent institution attended. The number of students transferring to UW from each college is related in part to each college’s overall enrollment; NWC is fifth in both enrollment and transfers to UW.

HEADCOUNT OF NORTHWEST COLLEGE TRANSFERS TO UW COLLEGES – FALL 2011-2015

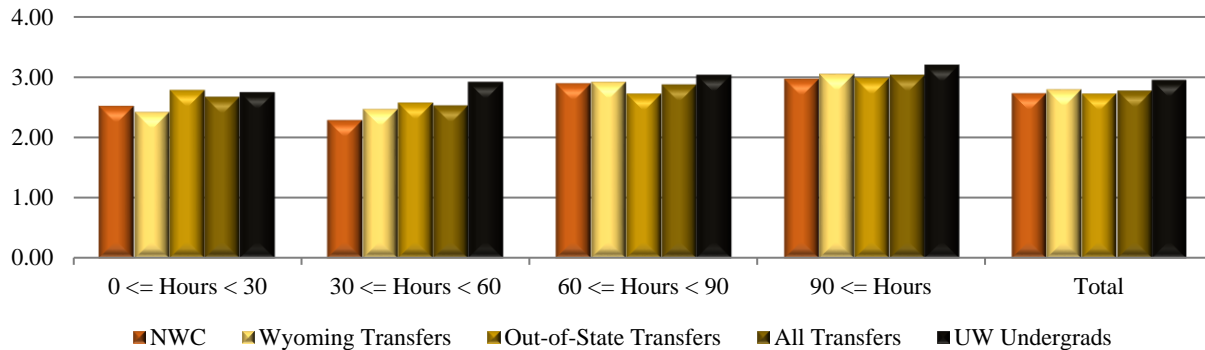


Source: UW New Transfer Students Report – 2015-16, Figure 2b

The **majority of NWC transfer students major in Arts and Sciences** programs at UW. The second highest number of transfers major in Health Sciences programs.

UW FIRST-SEMESTER GPA (Degree-Seeking Transfers and UW Undergraduates)

UW First Semester GPA by Hours Transferred
Five-Year Average (Fall 2011 - 2015)

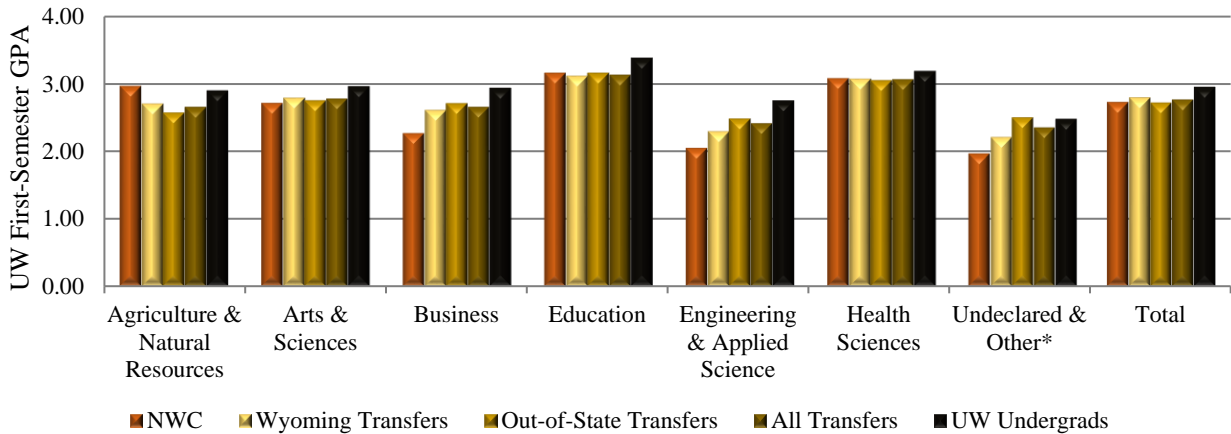


Source: UW New Transfer Students Reports – 2011-12 through 2015-16, Figure 4

Over the past five years, NWC transfers averaged a lower UW first-semester GPA (2.72) than all Wyoming transfers (2.80) and UW undergraduates (2.95). For all transfer groups, those who transferred 60 or more credit hours earned higher GPAs than those who transferred fewer than 60 credits.

In Fall 2015 specifically, NWC transfers earned a higher first-semester GPA (3.05) than all Wyoming transfers (2.90), out-of-state transfers (2.68), and UW undergraduates (3.00). NWC transfers who transferred 60-90 credit hours earned substantially higher GPAs (3.25) than peers from other transfer groups (Wyoming - 3.01; out-of-state - 2.65) and all UW undergraduates (3.07).

UW First Semester GPA by UW College
Five-Year Average (Fall 2011 - 2015)



*Other includes Energy Resource Science majors.

Source: UW New Transfer Students Reports – 2011-12 through 2015-16, Figure 3a

Over the past five years:

- NWC transfers into the UW Colleges of **Education, Health Sciences, and Agriculture and Natural Resources** earned **higher first-semester UW GPAs** than NWC transfers into other UW Colleges.
- NWC transfers into **Agriculture and Natural Resources** earned a **higher first-semester GPA** than any other transfer group or UW undergraduates in that UW College.

RETENTION & GRADUATION

Retention & Graduation of Degree-Seeking Transfers from Community Colleges Entering with 60 or More Credit Hours Cohort Years 2006 – 2014

| Cohort Year | Head Count | % Part-Time | ----- Cumulative Retention and Graduation Rates ----- | | | | | | | | | | |
|-----------------------------------|------------|-------------|---|-----------------|------------------|-----------------|------------------|-----------------|------------------|-----------------|------------------|-----------------|------------------|
| | | | % Cont to 2nd Yr | % Grad in 2 Yrs | % Cont to 3rd Yr | % Grad in 3 Yrs | % Cont to 4th Yr | % Grad in 4 Yrs | % Cont to 5th Yr | % Grad in 5 Yrs | % Cont to 6th Yr | % Grad in 6 Yrs | % Cont to 7th Yr |
| <i>Northwest College</i> | | | | | | | | | | | | | |
| 2006 | 26 | 38% | 69% | 35% | 31% | 50% | 15% | 62% | 8% | 65% | 0% | 65% | 0% |
| 2007 | 39 | 21% | 80% | 28% | 49% | 69% | 8% | 72% | 3% | 74% | 3% | 74% | 3% |
| 2008 | 47 | 34% | 79% | 21% | 51% | 57% | 11% | 66% | 0% | 66% | 2% | 66% | 2% |
| 2009 | 42 | 17% | 81% | 21% | 50% | 48% | 36% | 67% | 10% | 71% | 5% | 74% | 5% |
| 2010 | 38 | 34% | 79% | 24% | 53% | 45% | 21% | 58% | 13% | 58% | 8% | | |
| 2011 | 45 | 18% | 69% | 20% | 49% | 51% | 20% | 58% | 18% | | | | |
| 2012 | 60 | 30% | 73% | 28% | 42% | 48% | 15% | | | | | | |
| 2013 | 54 | 19% | 76% | 22% | 50% | | | | | | | | |
| 2014 | 44 | 18% | 86% | | | | | | | | | | |
| <i>Wyoming Community Colleges</i> | | | | | | | | | | | | | |
| 2006 | 361 | 31% | 75% | 34% | 37% | 55% | 13% | 62% | 9% | 67% | 3% | 67% | 3% |
| 2007 | 367 | 37% | 78% | 35% | 41% | 59% | 13% | 66% | 8% | 69% | 4% | 71% | 3% |
| 2008 | 392 | 43% | 74% | 30% | 42% | 52% | 18% | 63% | 6% | 66% | 4% | 67% | 2% |
| 2009 | 418 | 37% | 77% | 28% | 47% | 60% | 15% | 68% | 5% | 71% | 3% | 72% | 2% |
| 2010 | 456 | 34% | 78% | 31% | 44% | 55% | 18% | 66% | 7% | 70% | 3% | | |
| 2011 | 461 | 35% | 78% | 22% | 48% | 52% | 18% | 60% | 9% | | | | |
| 2012 | 500 | 37% | 78% | 29% | 43% | 54% | 15% | | | | | | |
| 2013 | 465 | 37% | 76% | 24% | 48% | | | | | | | | |
| 2014 | 448 | 35% | 78% | | | | | | | | | | |
| <i>All Community Colleges</i> | | | | | | | | | | | | | |
| 2006 | 415 | 29% | 75% | 33% | 37% | 55% | 12% | 61% | 8% | 65% | 2% | 66% | 3% |
| 2007 | 431 | 36% | 77% | 33% | 42% | 58% | 14% | 65% | 9% | 68% | 5% | 70% | 3% |
| 2008 | 472 | 43% | 72% | 26% | 42% | 48% | 19% | 59% | 7% | 63% | 4% | 64% | 2% |
| 2009 | 515 | 34% | 78% | 26% | 48% | 58% | 15% | 67% | 6% | 70% | 3% | 71% | 3% |
| 2010 | 557 | 34% | 76% | 29% | 44% | 54% | 17% | 64% | 7% | 68% | 3% | | |
| 2011 | 564 | 38% | 75% | 20% | 48% | 49% | 18% | 57% | 9% | | | | |
| 2012 | 602 | 38% | 77% | 26% | 44% | 51% | 16% | | | | | | |
| 2013 | 552 | 37% | 75% | 23% | 47% | | | | | | | | |
| 2014 | 551 | 32% | 77% | | | | | | | | | | |

Source: UW New Transfer Students Report – 2015-16, Figure 5b

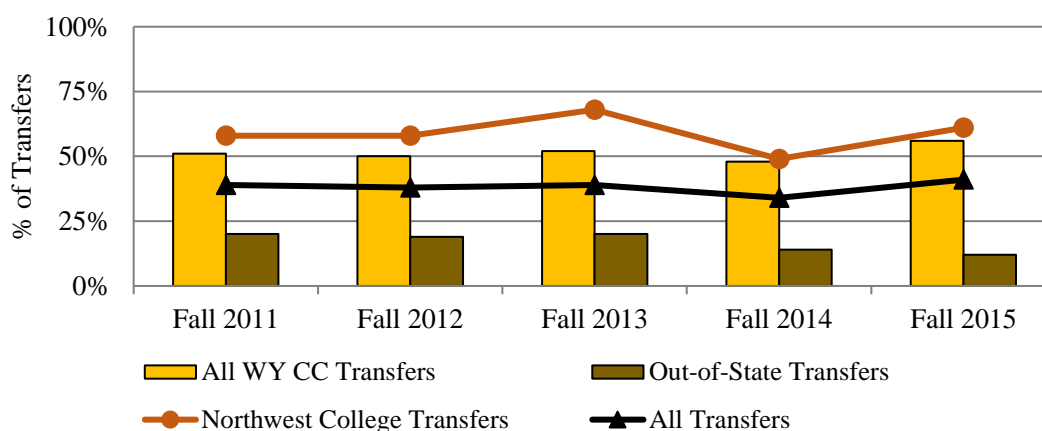
Of the 2006 through 2014 cohorts of NWC transfers entering UW with **60 or more credits**:

- **77% continued into their 2nd year** (compared to 77% of Wyoming community college transfers and 76% of all community college transfers)
- **24% graduated within 2 years** at UW (Wyoming transfers – 29%; all transfers – 27%)
- **64% graduated within 4 years** (Wyoming transfers – 64%; all transfers – 62%)
- **70% graduated within 6 years** (Wyoming transfers – 69%; all transfers – 68%)

Of NWC transfers into UW with **fewer than 60 credits**:

- 75% continued into their 2nd year
- 20% graduated within 2 years
- 61% graduated within 4 years
- 68% graduated within 6 years

TRANSFERS TO UW WITH TRANSFERRABLE ASSOCIATE'S DEGREES* – FALL 2011-2015



| Institution** | Five-Year Total | |
|--|-----------------|---------------------------------------|
| | # of Transfers | % with UW Transferrable Assoc Degree* |
| Casper College | 758 | 60% |
| Central Wyoming College | 279 | 47% |
| Eastern Wyoming College | 148 | 48% |
| Laramie County Community College | 917 | 43% |
| Northwest College | 335 | 59% |
| Northern Wyoming Community College District | 434 | 44% |
| Western Wyoming Community College | 416 | 58% |
| All Wyoming Community College Transfers | 3287 | 51% |
| Out-of-State Transfers | 2027 | 17% |
| All Transfers | 5314 | 38% |

*Transferrable degrees include Associate's of Arts and Associate's of Science.

**Associate's degrees may have been granted from a different institution.

Source: UW New Transfer Students Report – 2015-16, Figure 6a

From Fall 2011 through Fall 2015, **59% of NWC transfers entered UW with a transferrable associate's degree**. Casper College and Western Wyoming Community College had comparable percentages with 60% and 58%, respectively. Much smaller percentages of transfers from the other Wyoming colleges entered UW with a transferrable associate's degree (43-48%). Of NWC transfers with transferrable degrees, **37% earned an Associate's of Arts and 63% earned an Associate's of Science**.

CONCLUSION

Students who transfer 60 or more credits earn a higher UW first-semester GPA and are more likely to graduate with 6 years of entering UW. These are likely students who previously earned an associate's degree and have experience navigating the college system. Students who earn a transferrable associate's degree from NWC will also have a more seamless transfer of credits to UW. These findings support NWC's stance on encouraging students to earn an associate's degree before transferring to help them have continued success in their studies.